

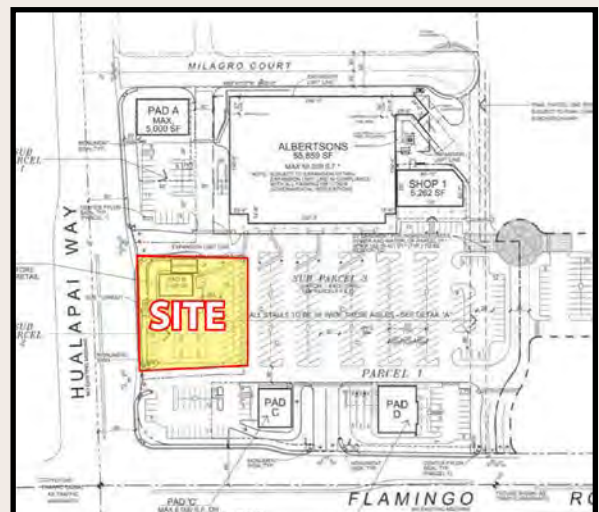
PAD FOR SALE

Flamingo Promenade
NEC Flamingo & Hualapai



HIGHLIGHTS

- Grocery anchored center
- Zoned C-2
- Pad rough graded with curb, gutter, landscaping and utilities to site
- Fully signalized intersection
- South Summerlin still growing
- No drive-thru uses permitted
- Must self-park
- APN 163-18-411-002



Lisa J. Callahan

lcallahan@sagelv.com

702.588.5254

License # B.0052504.LLC

Rhonda White

rwhite@sagelv.com

702.588.5255

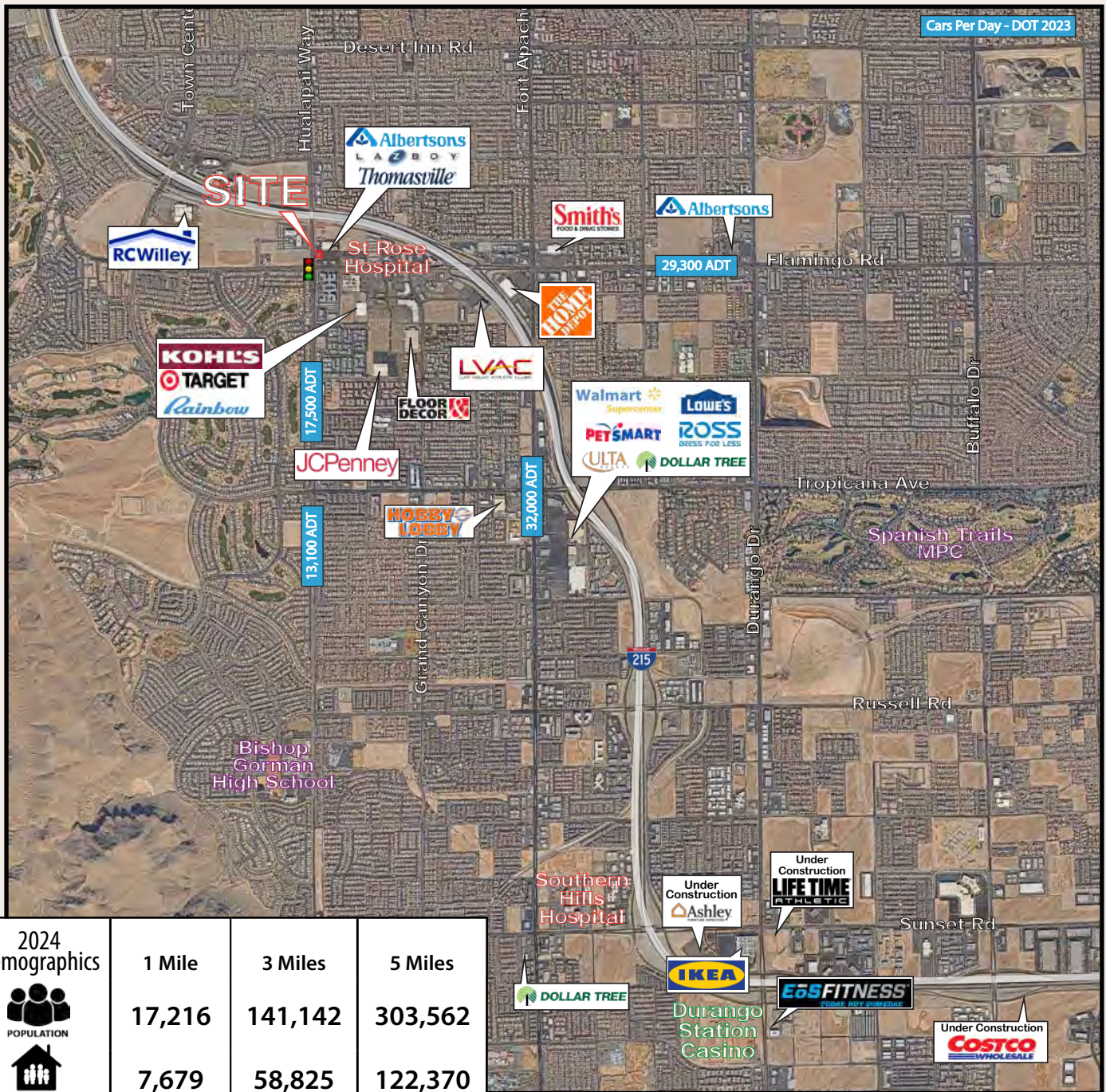
License # S.0046288



* The information contained herein has been obtained from sources believed reliable. While we do not doubt its accuracy, we have not verified it and make no guarantee, warranty or representation about it. It is your responsibility to independently confirm its accuracy and completeness.

PAD FOR SALE

Flamingo Promenade NEC Flamingo & Hualapai



Lisa J. Callahan

lcallahan@sagelv.com

702.588.5254

License # B.0052504.LLC

Rhonda White

rwhite@sagelv.com

702.588.5255

License # S.0046288



* The information contained herein has been obtained from sources believed reliable. While we do not doubt its accuracy, we have not verified it and make no guarantee, warranty or representation about it. It is your responsibility to independently confirm its accuracy and completeness.